

## **Arctice**

### **Risk Index no-class**

The Arctic Ice Condition Index (ARCTICE) is a mariner decision support tool for vessels sailing in the Arctic Ocean. ARCTICE is based on the IMO Polar Code Polaris Amendment and communicates ice conditions that are relevant to the specific capabilities of an individual vessel. ARCTICE provides forecasts up to one month in the pan-Arctic region, with focus on the U.S. EEZ in the Bering, Chukchi, and Beaufort Sea regions. ARCTICE is currently in a preliminary operational environment and makes weekly products.

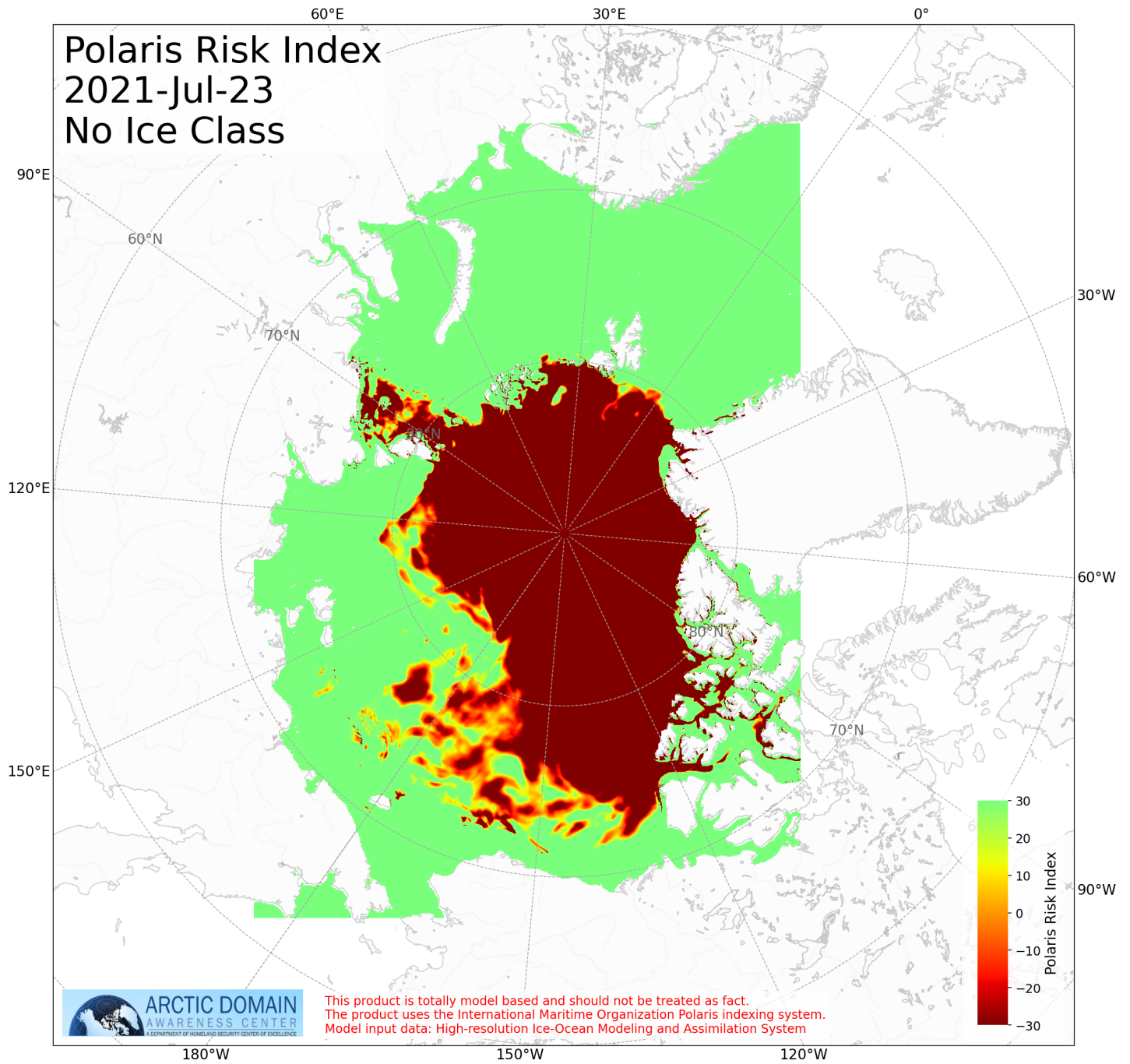


Figure 1: Risk Index no-class for Day 0

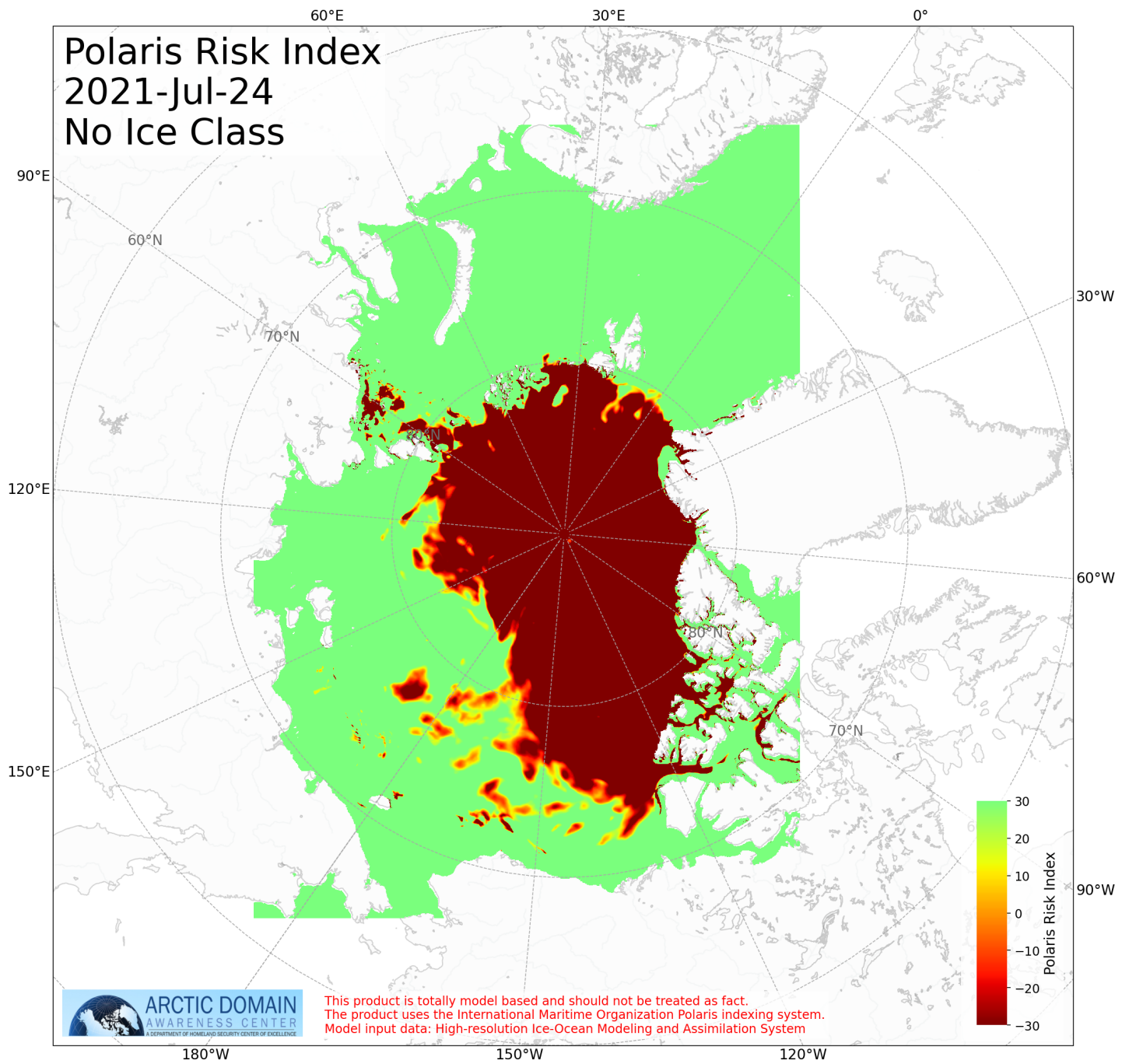


Figure 2: Risk Index no-class for Day 1

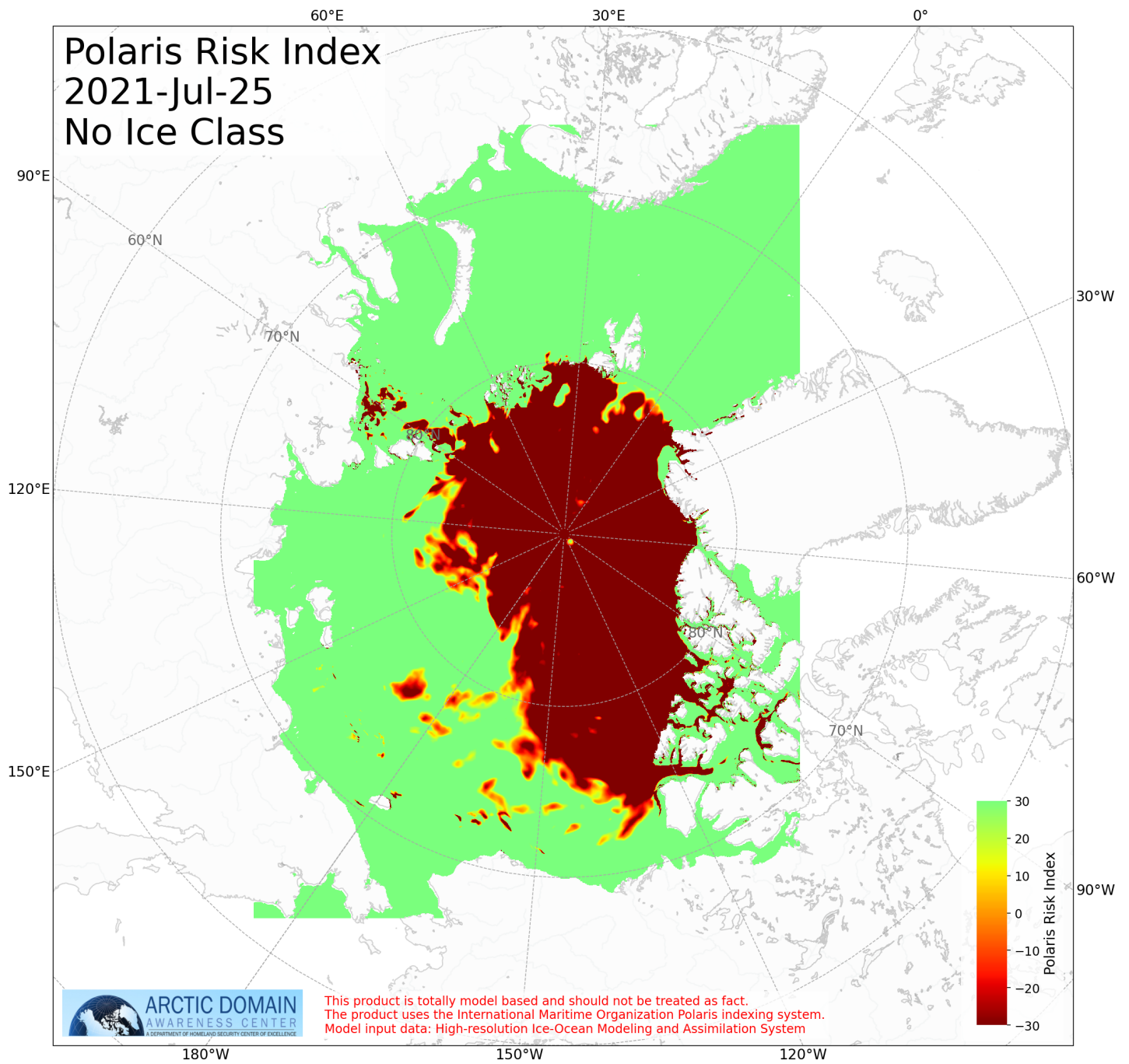


Figure 3: Risk Index no-class for Day 2



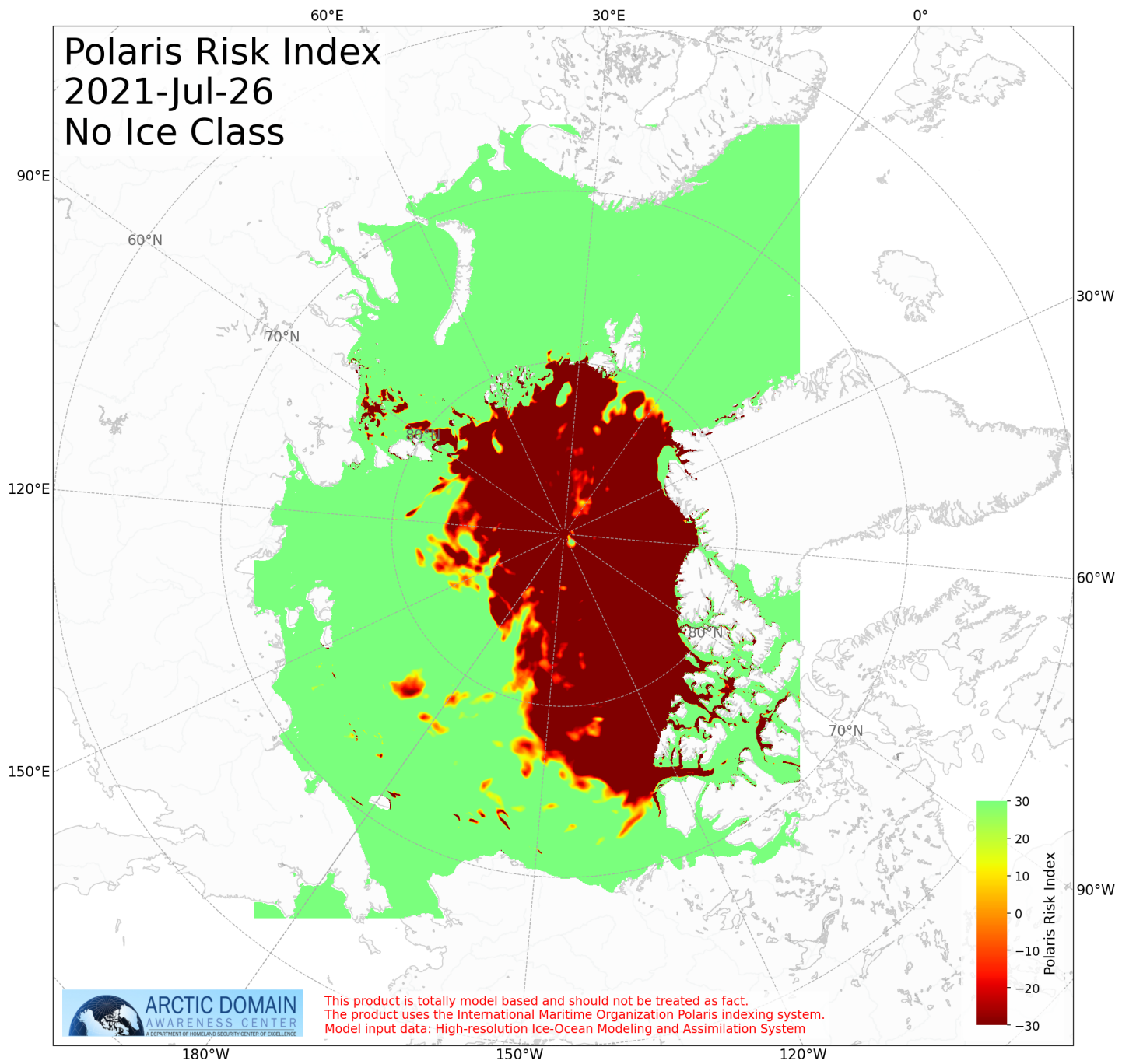


Figure 4: Risk Index no-class for Day 3

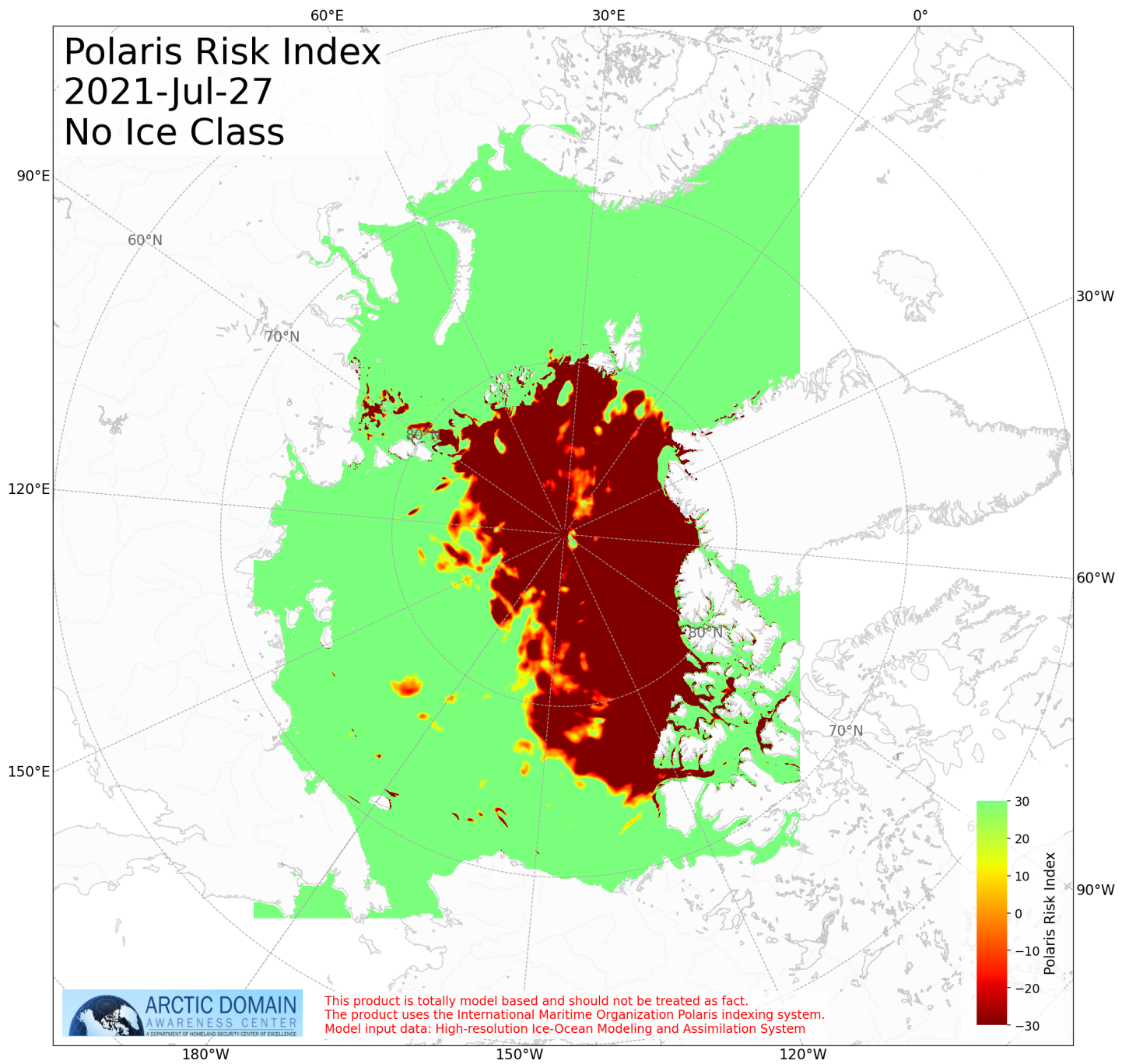


Figure 5: Risk Index no-class for Day 4

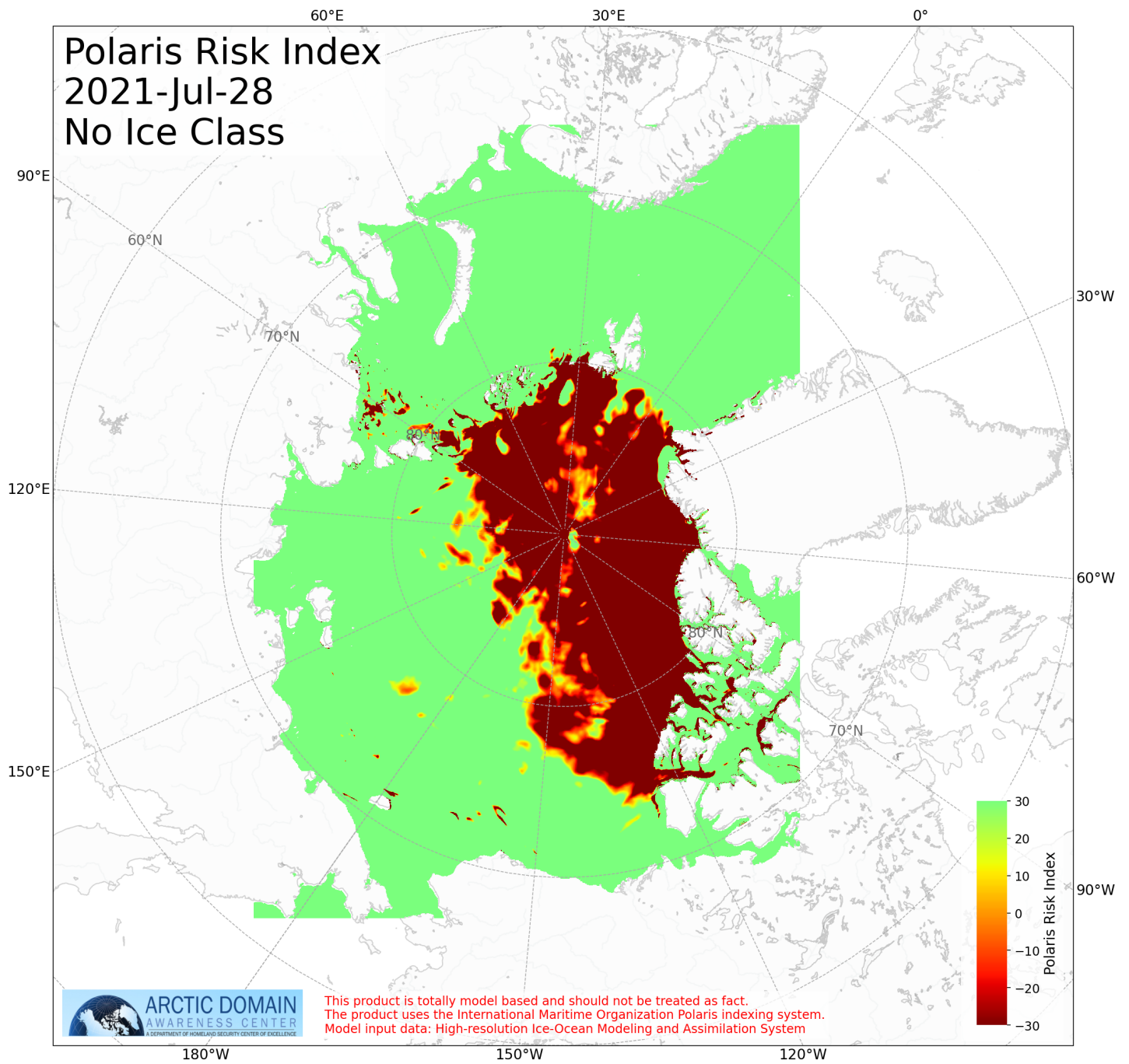


Figure 6: Risk Index no-class for Day 5

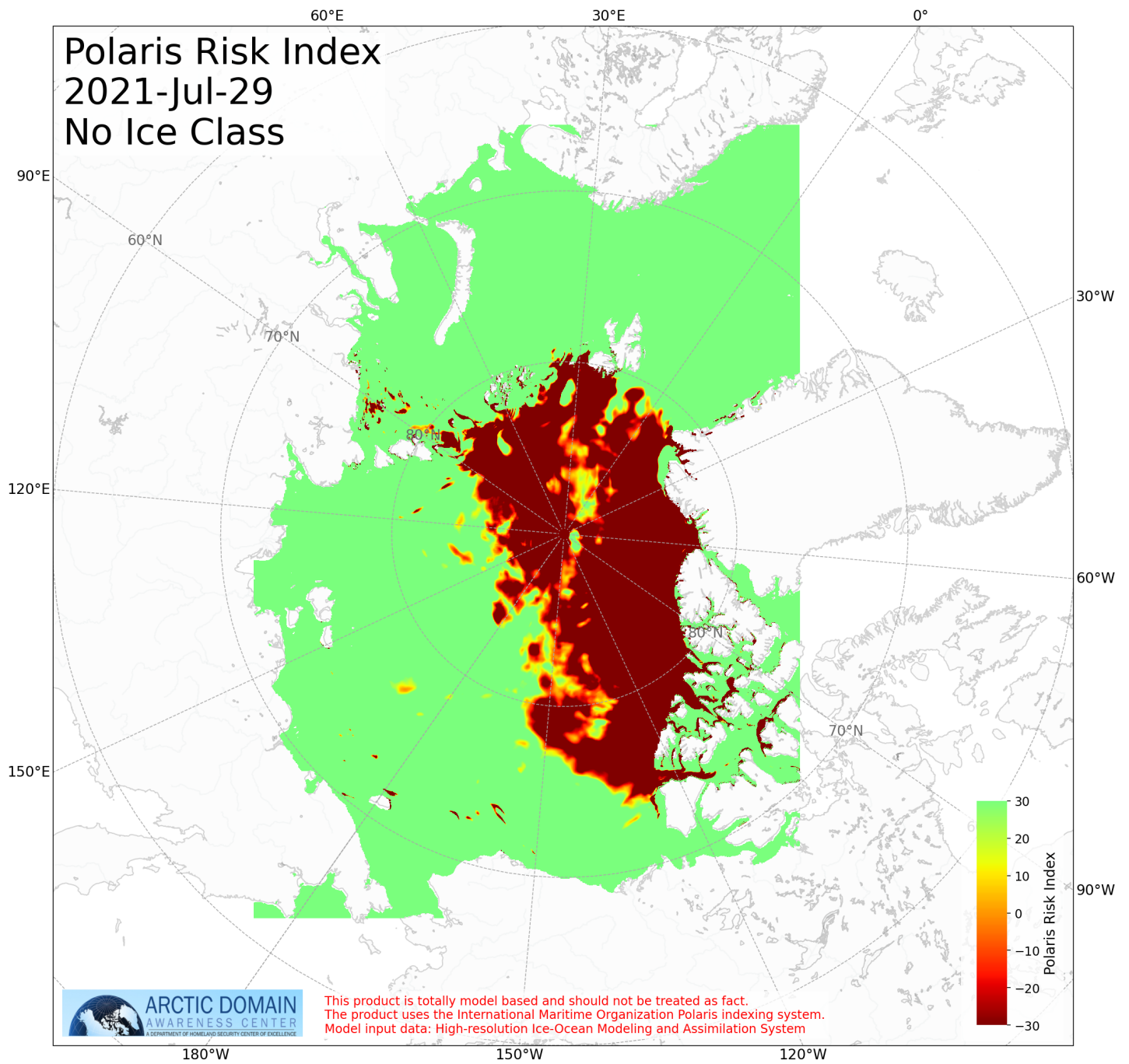


Figure 7: Risk Index no-class for Day 6



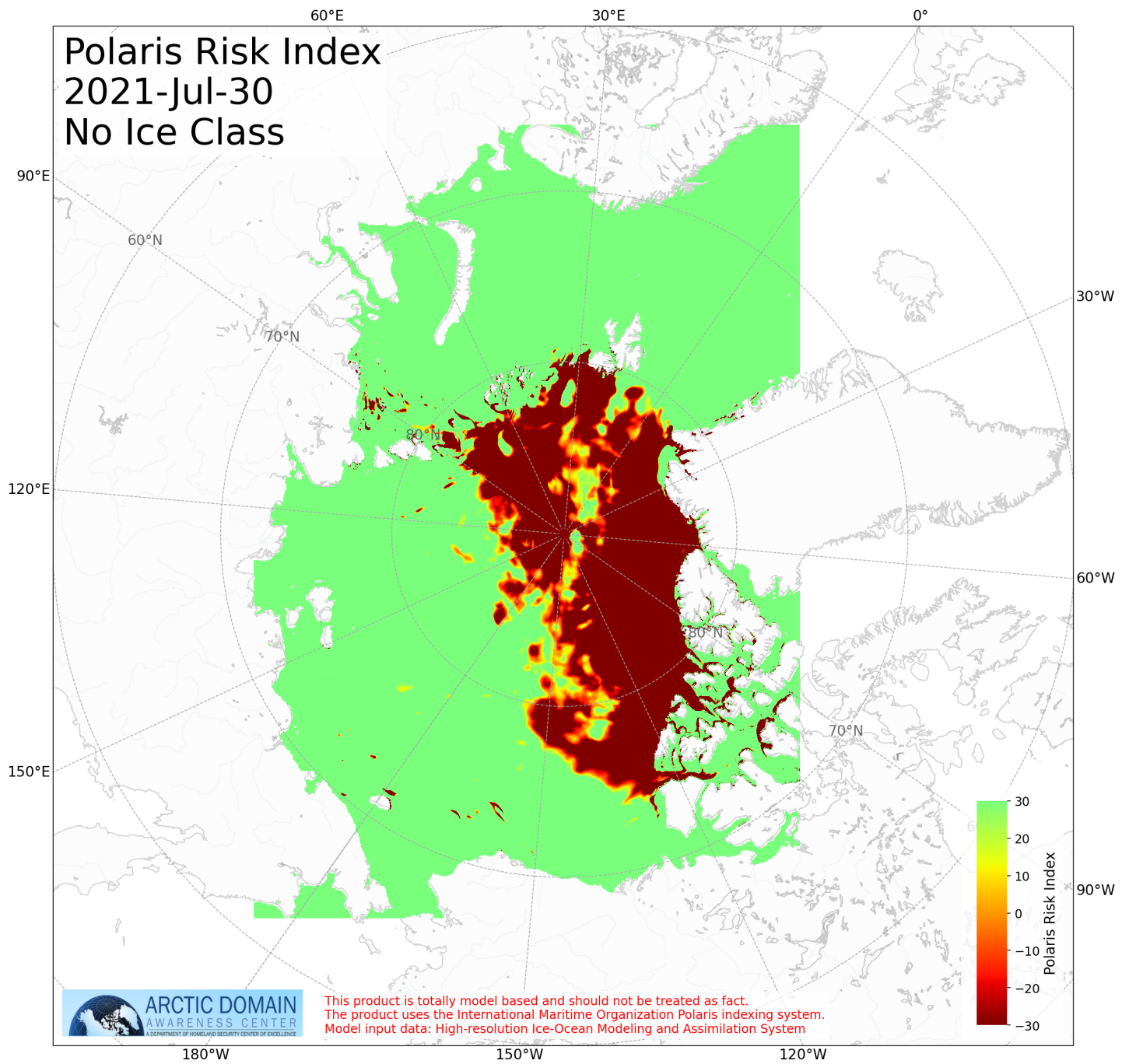


Figure 8: Risk Index no-class for Day 7

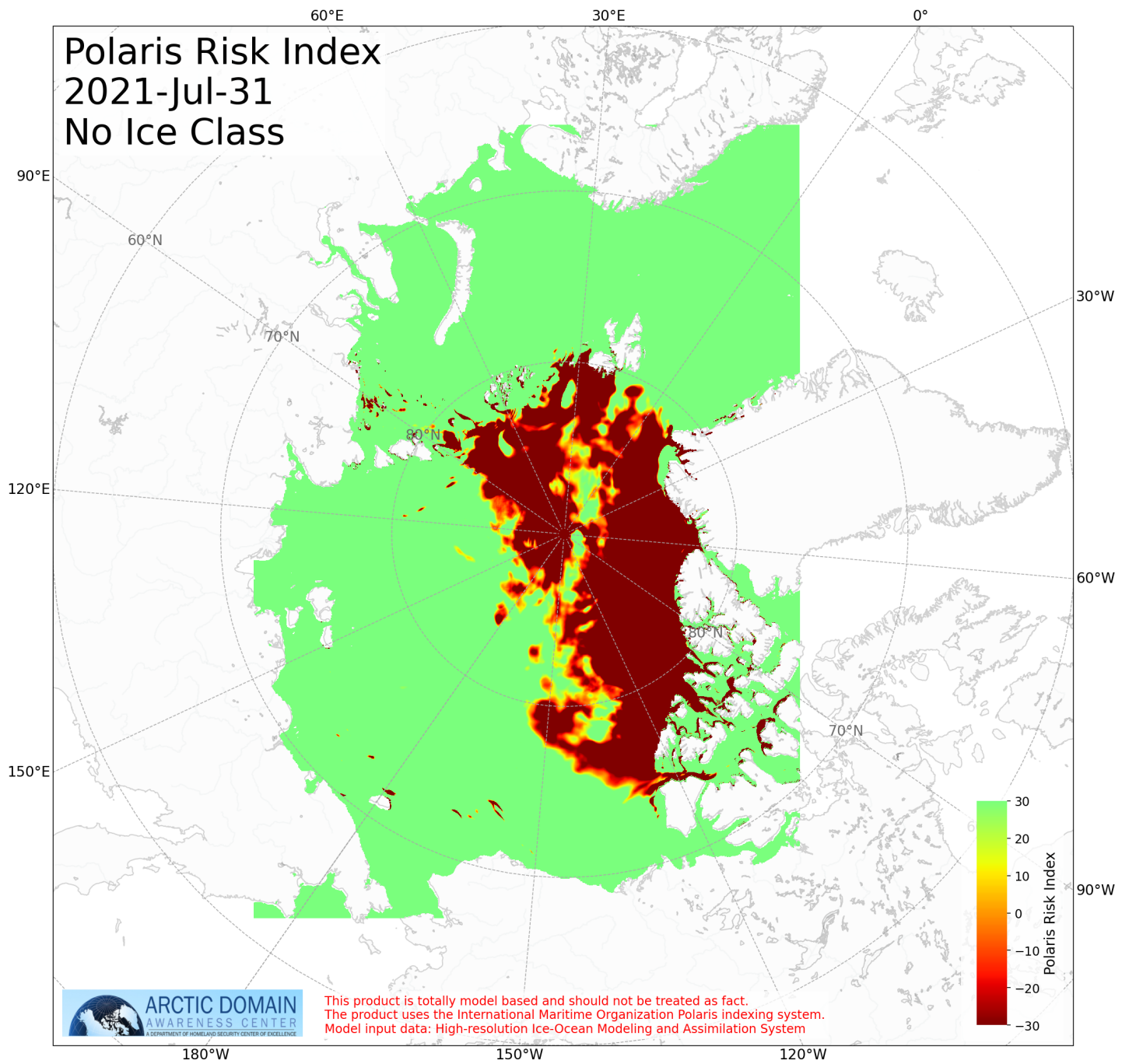


Figure 9: Risk Index no-class for Day 8



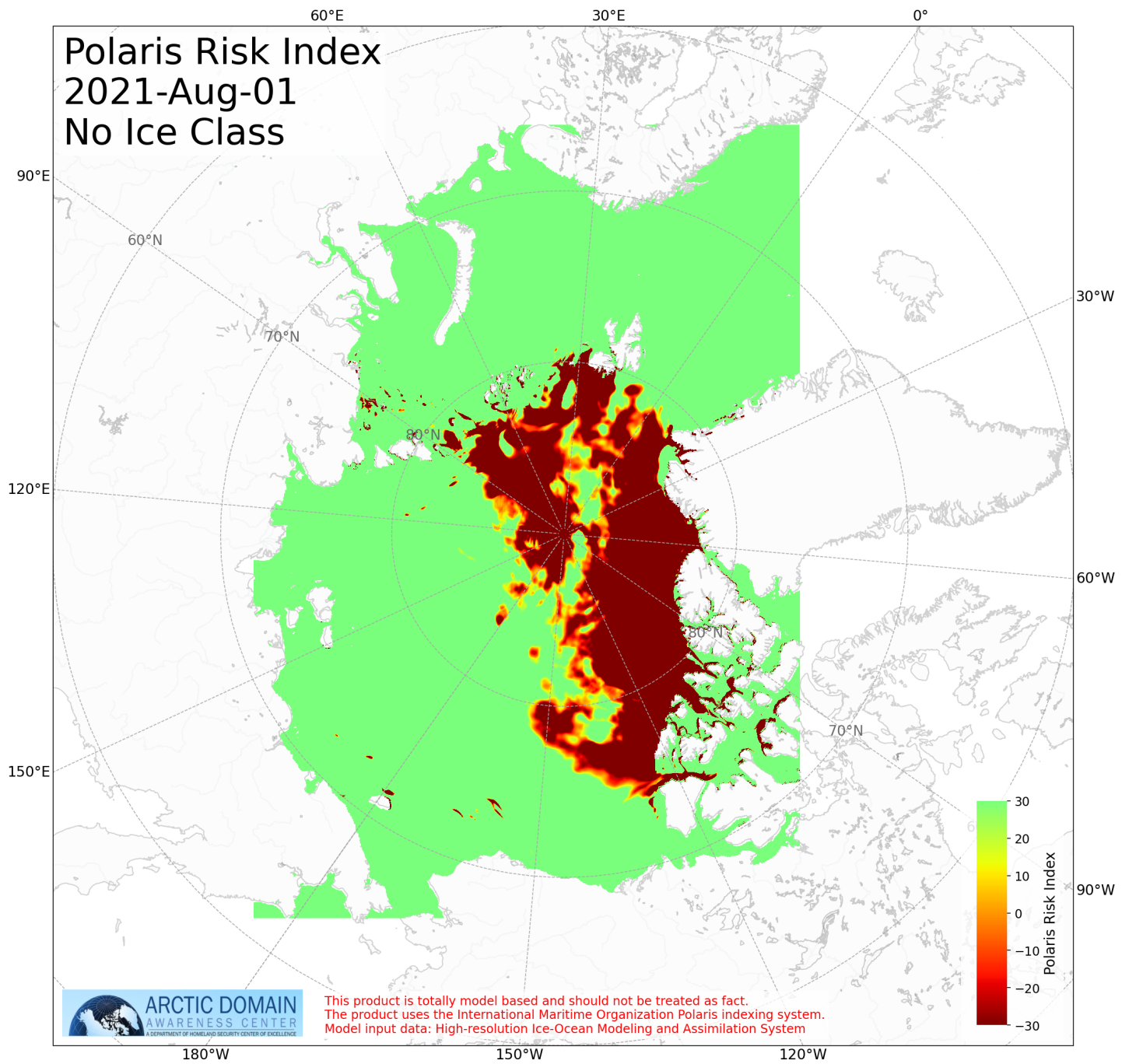


Figure 10: Risk Index no-class for Day 9

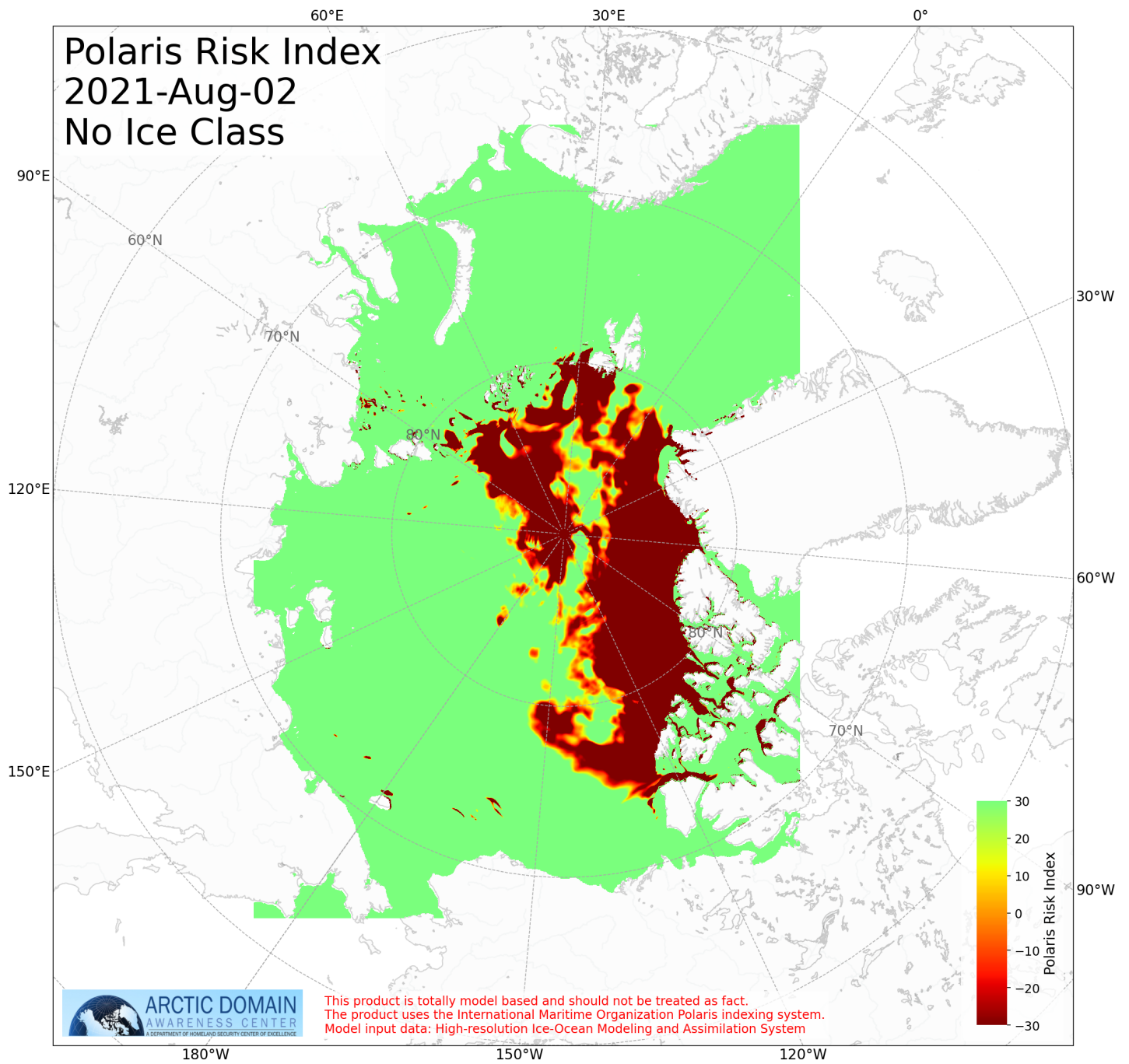


Figure 11: Risk Index no-class for Day 10

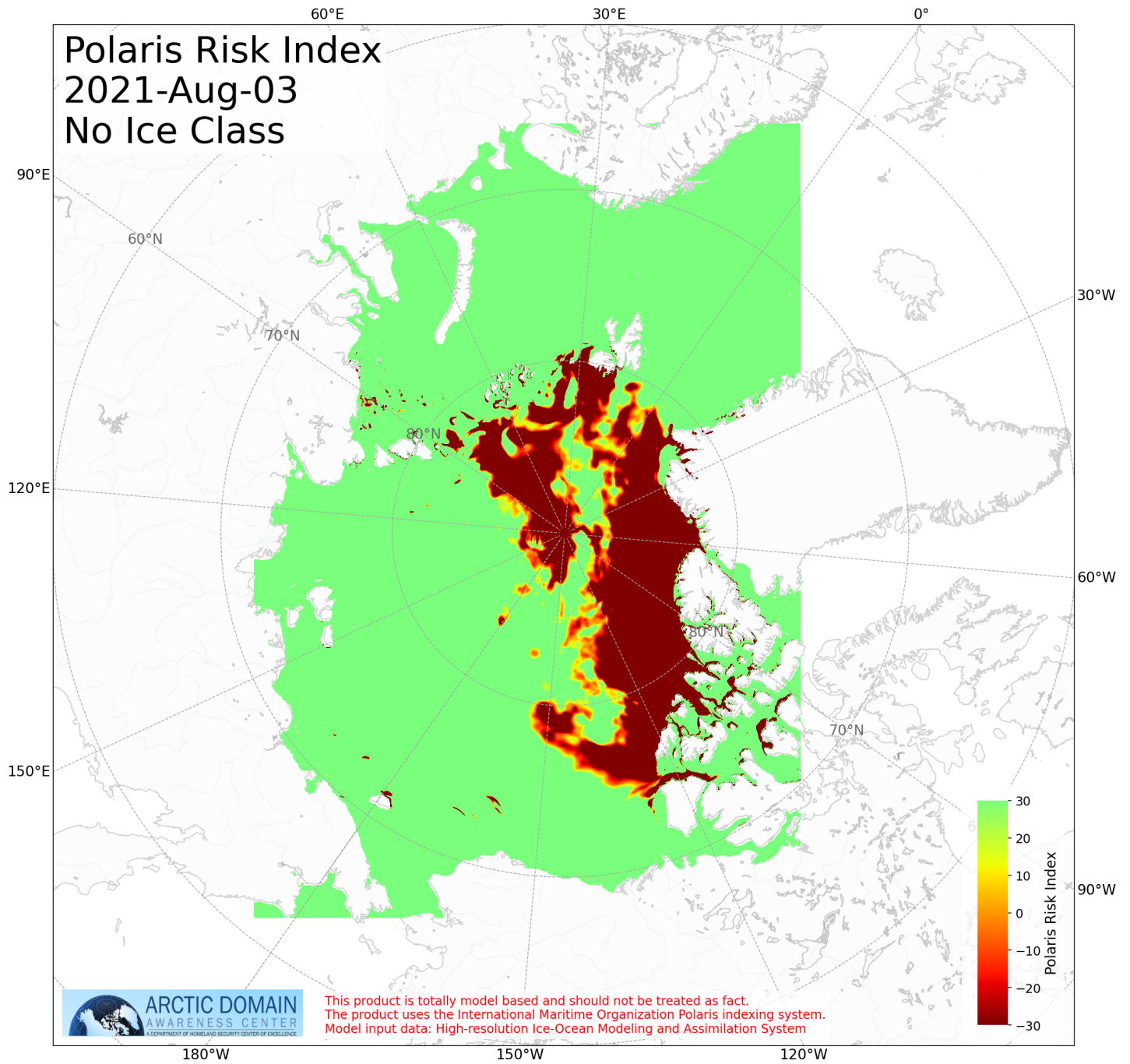


Figure 12: Risk Index no-class for Day 11

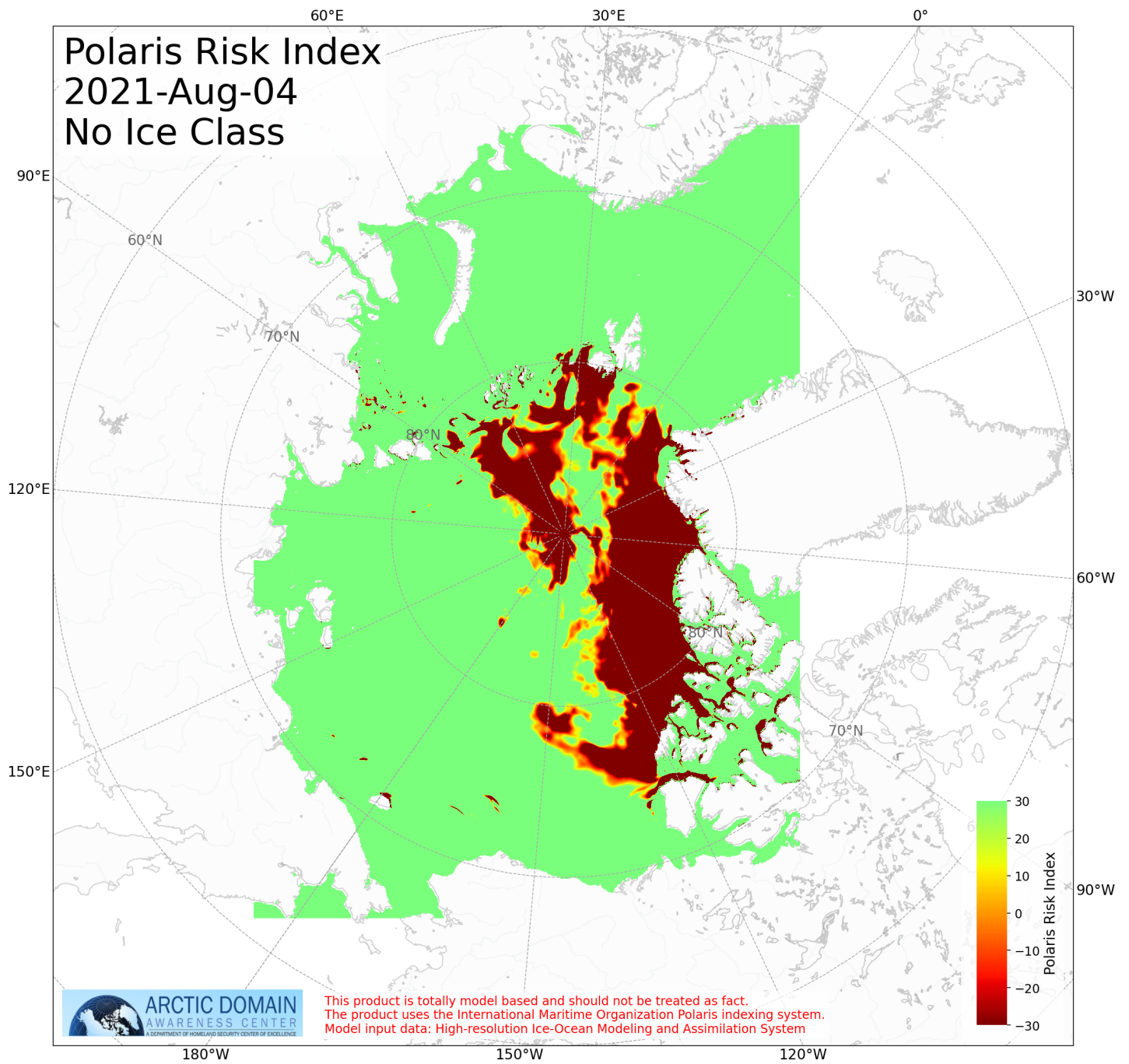


Figure 13: Risk Index no-class for Day 12



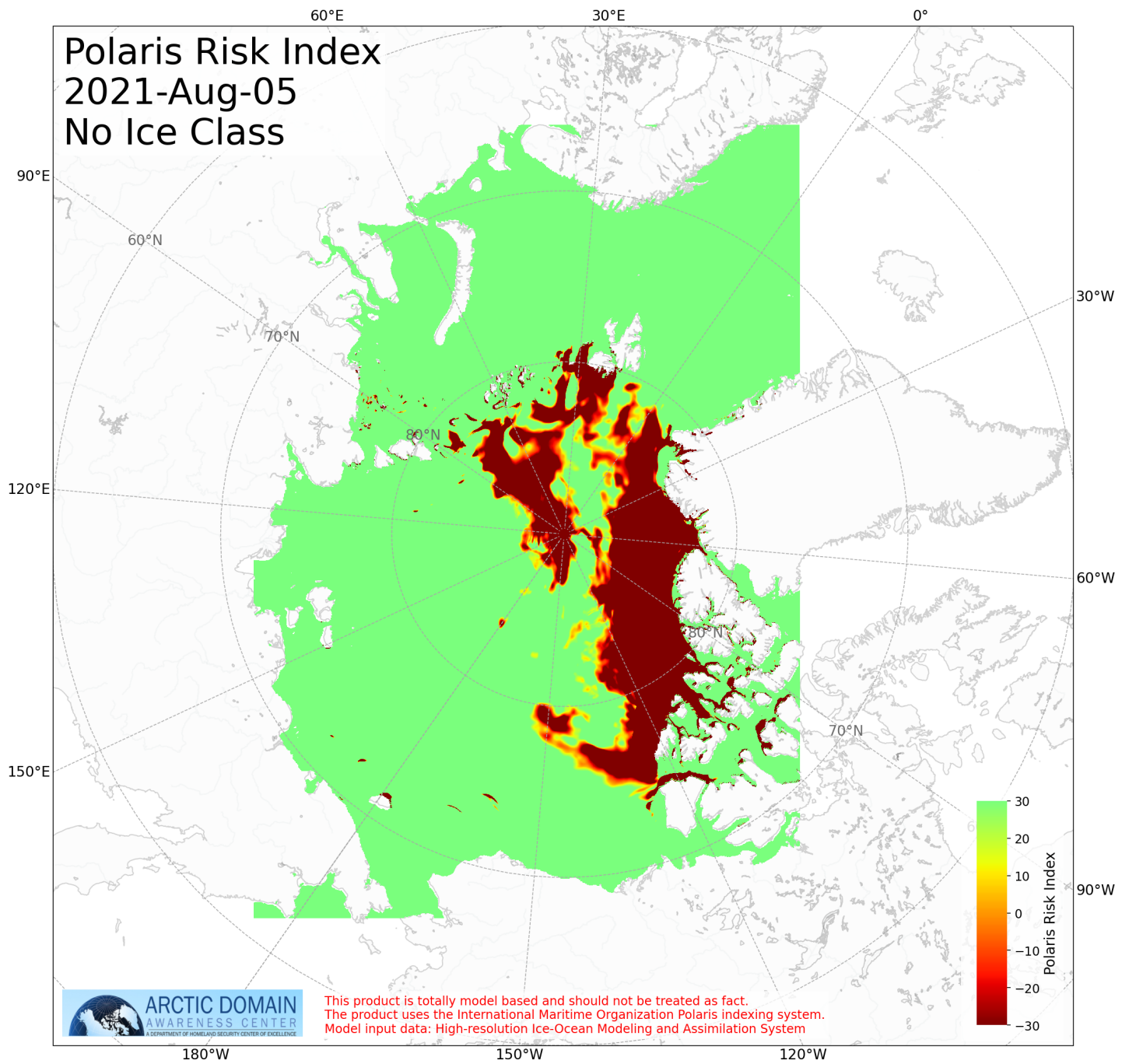


Figure 14: Risk Index no-class for Day 13

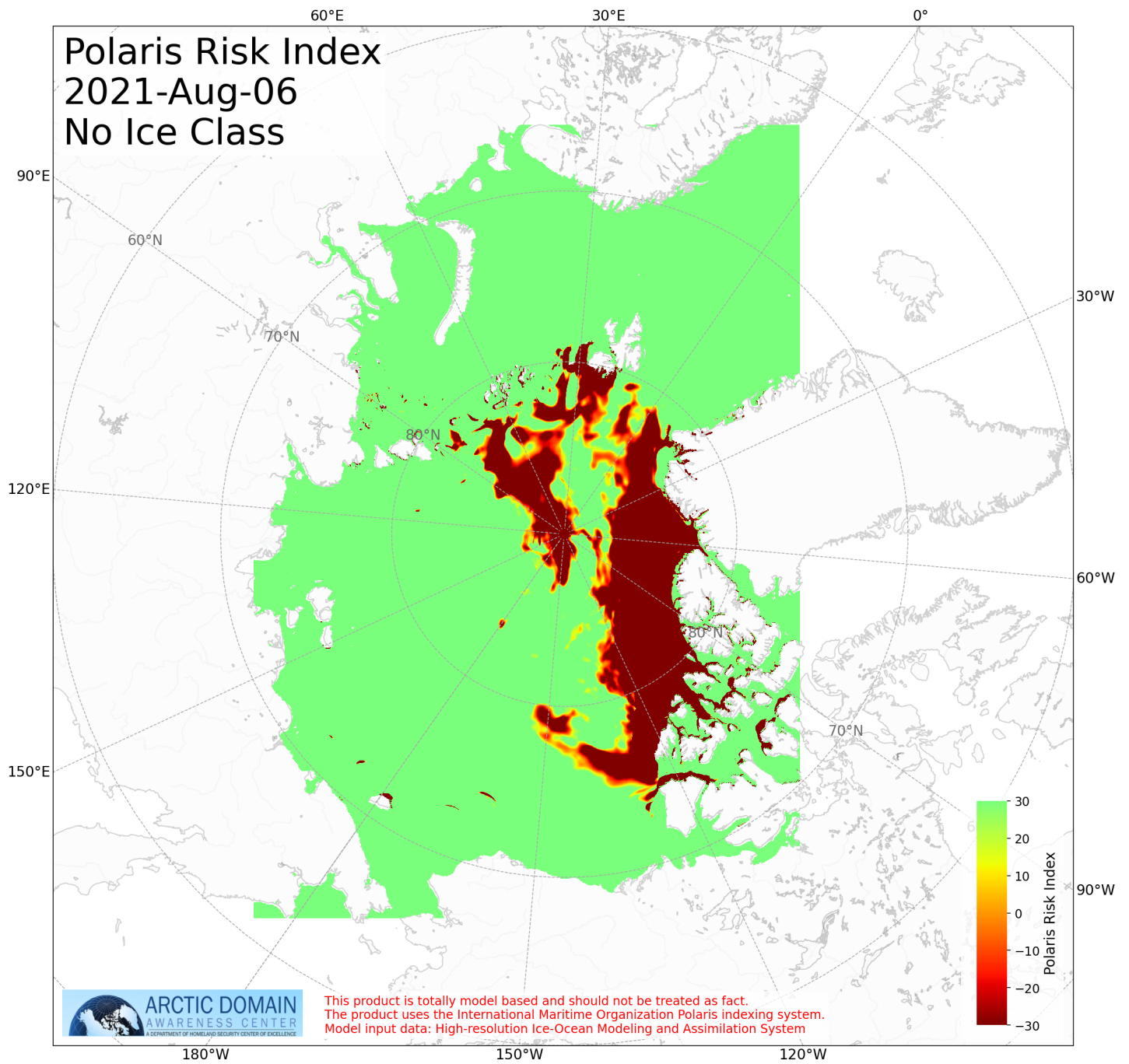


Figure 15: Risk Index no-class for Day 14



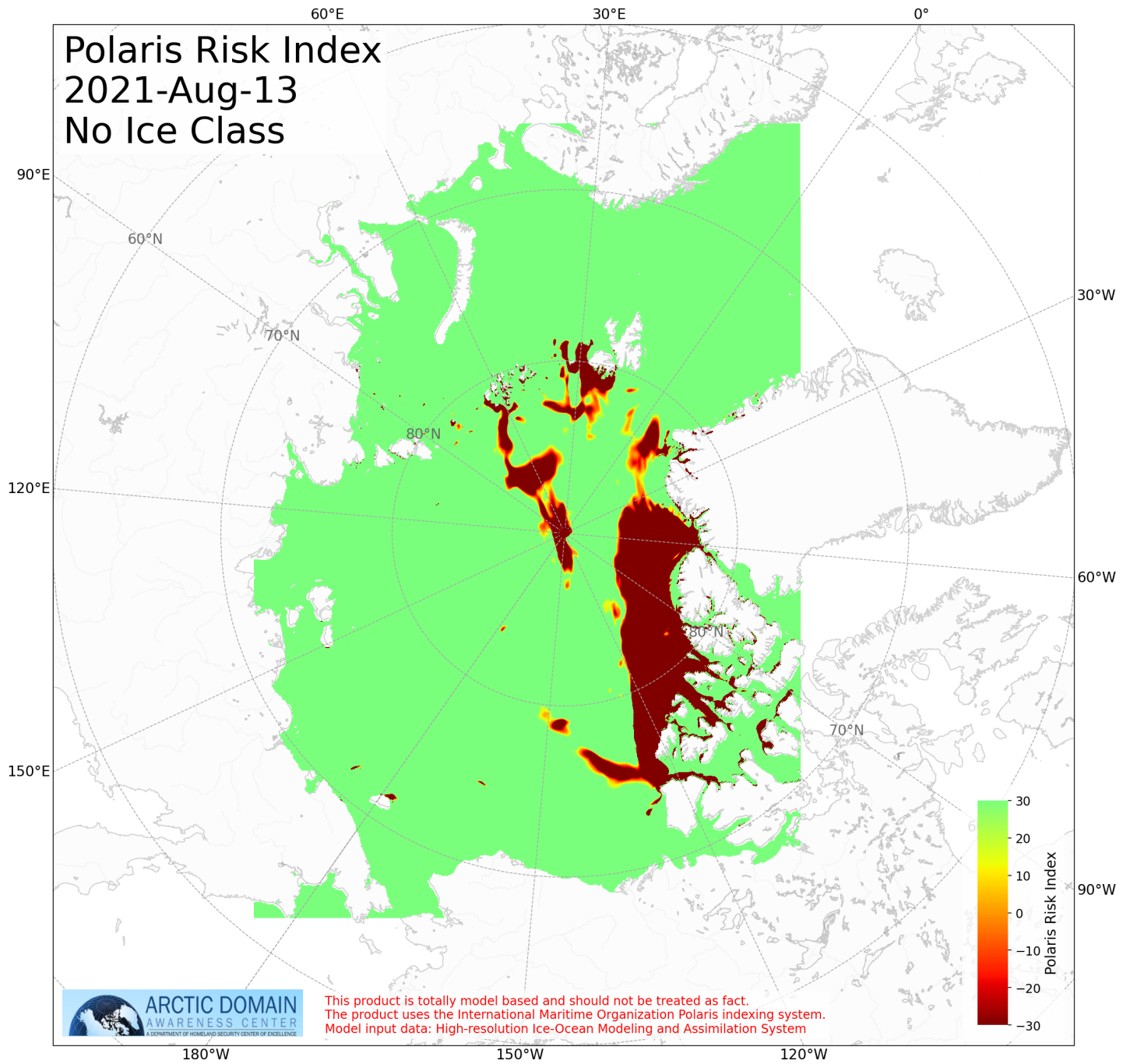


Figure 16: Risk Index no-class for Day 21

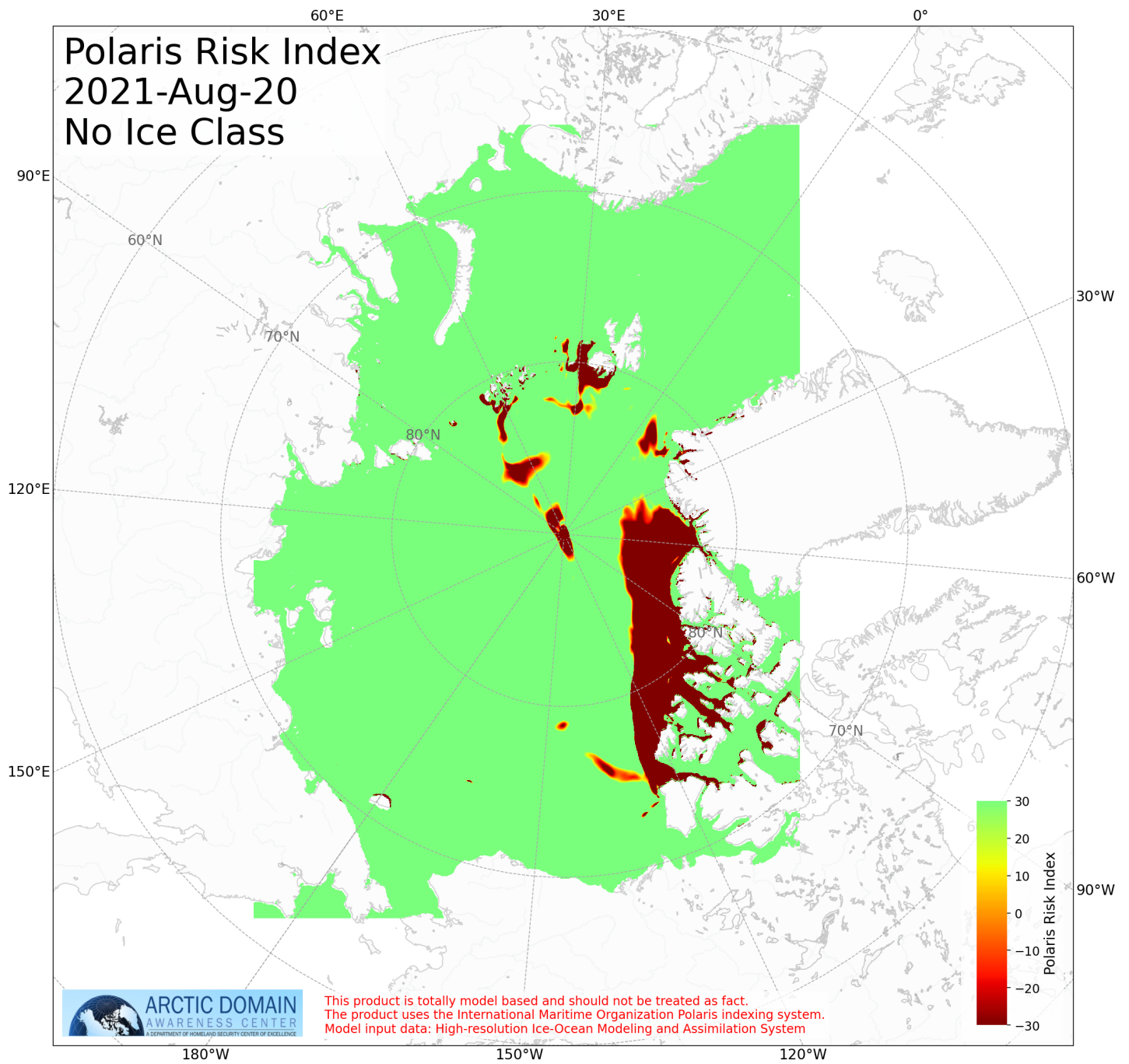


Figure 17: Risk Index no-class for Day 28